

Installation & Uninstallation of EML to PST Converter

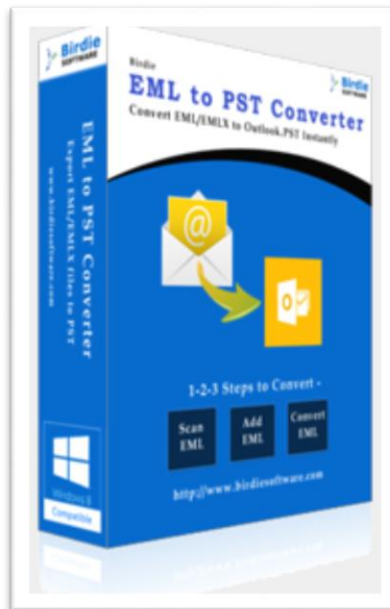




Table of Contents

1. Introduction.....
2. System Requirements.....
3. Installing EML to PST Converter.....
4. Uninstalling EML to PST Converter
 - I. Uninstalling the EML to PST Converter from Start Menu
 - II. Uninstalling the EML to PST Converter from Control Panel



1. Introduction

Welcome to the Installation Guide of Birdie EML to PST Converter

In the software manual, you will get the complete installation as well as uninstallation steps to Birdie EML to PST Converter.

2. System Requirements of the Installation

Before you start installation of the Birdie EML to PST Converter software, please check that your machine should meet the basic software requirements.

1. Windows Operating Systems: Supports Windows 8.1 and all below Windows OS versions
2. 2.4 GHZ Processor is recommended
3. 1 GB of RAM is Recommended
4. 3.06 MB of FREE hard disk space is required



3. Installing BirdieEML to PST Converter software

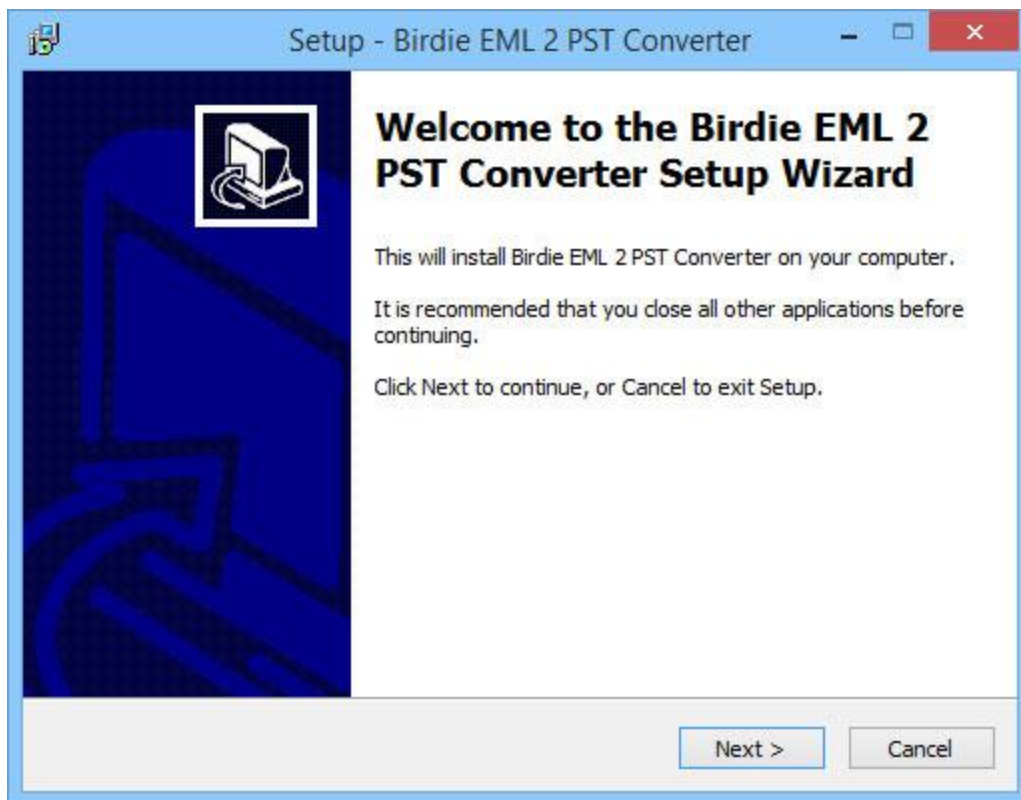
For installing Birdie EML to PST Converter, you first of all require the installer file or .exe on your machine/computer/system/pc. If you do not have it, then you can download it from:

<http://www.birdiesoftware.com/eml-to-pst/>

After downloading the installer file, follow the below steps



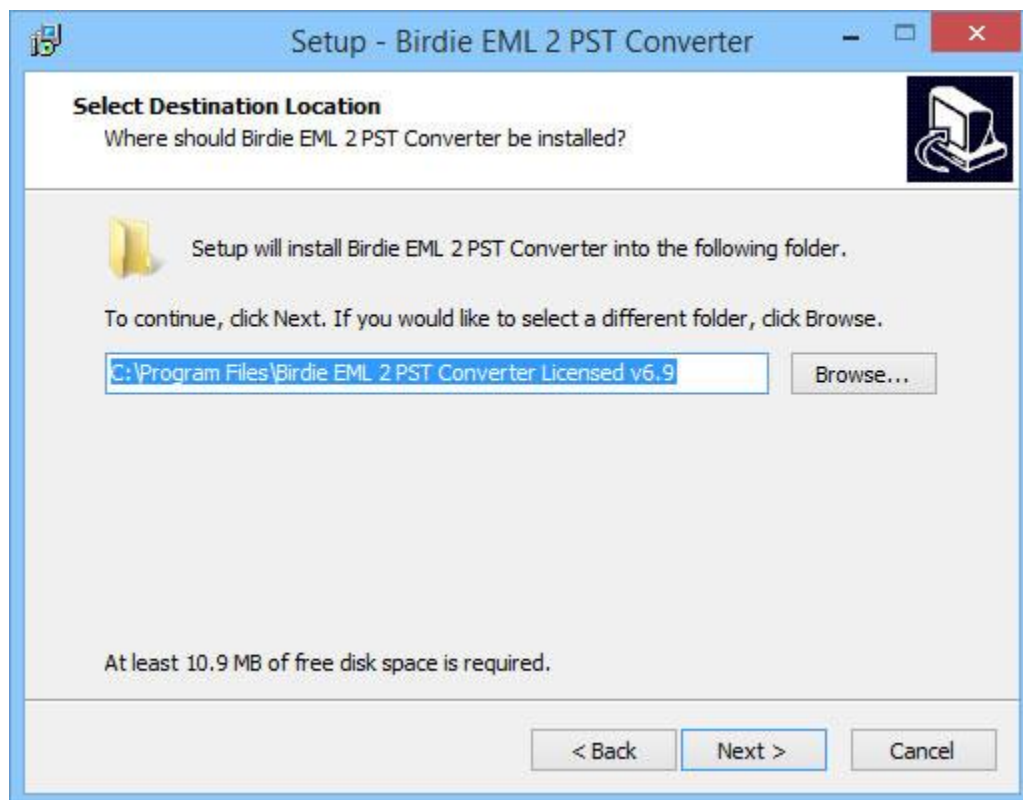
1. Double Click on installer file >> Next



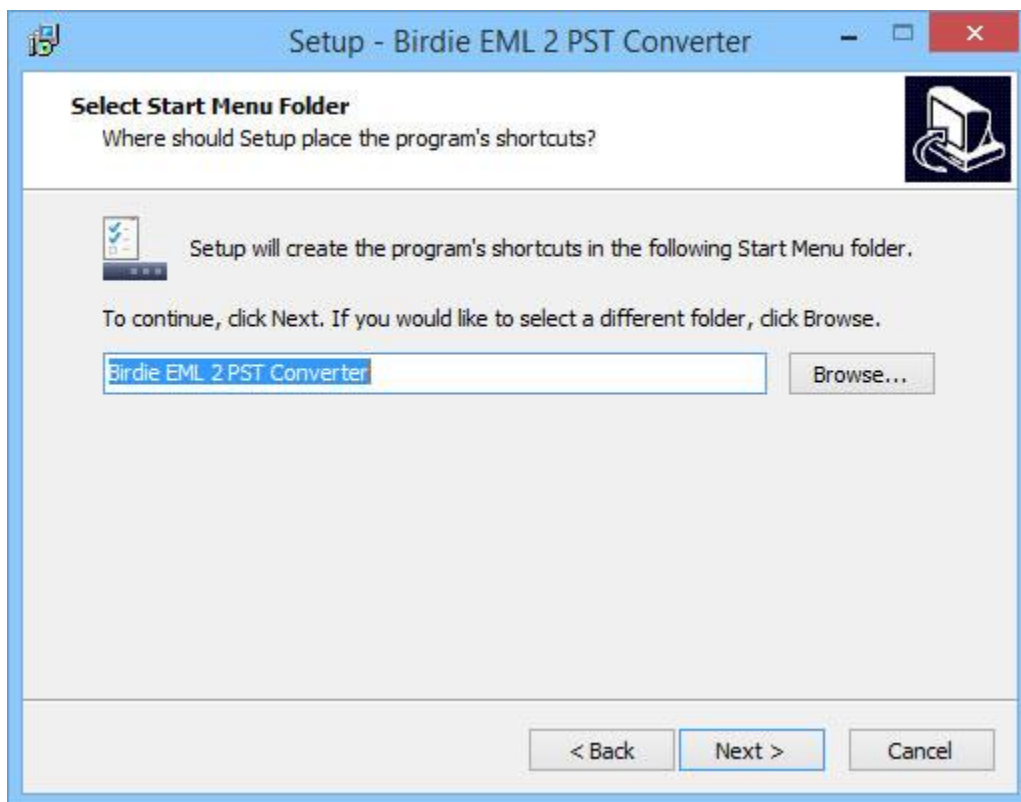
2. Select the “I accept the agreement” option >> Next



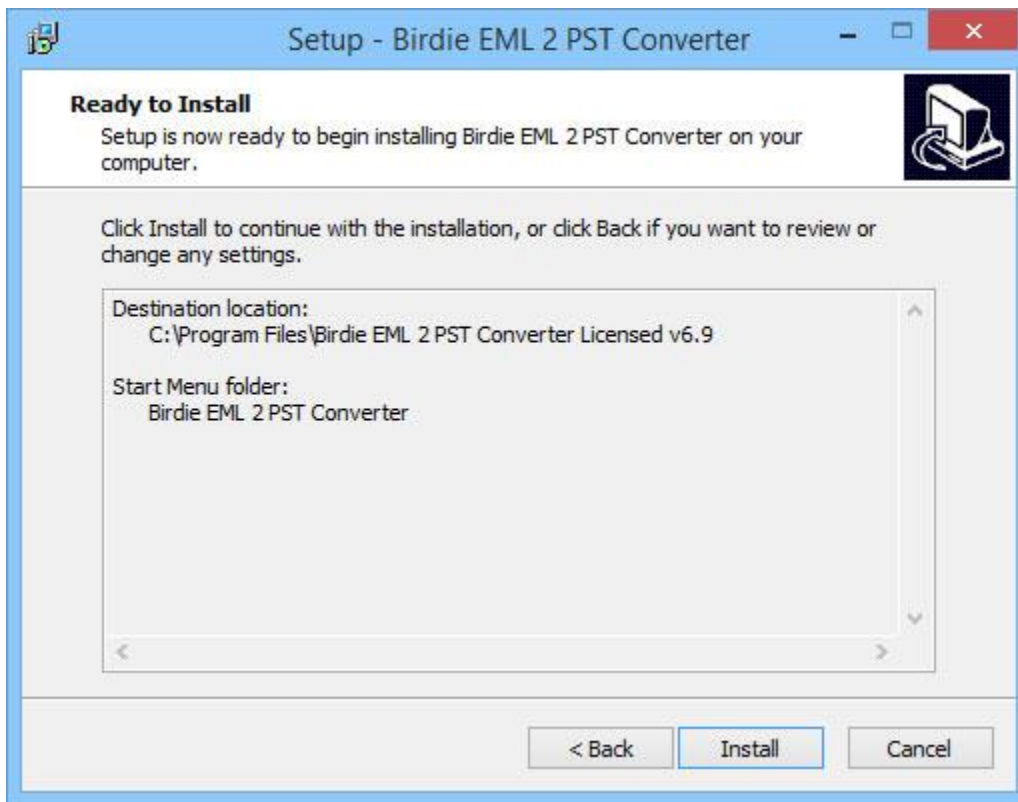
3. Now Choose the location, where you want the software to be installed. To change the destination, click on Browse option and choose the preferred location. And click on Next button once you done with selecting location.



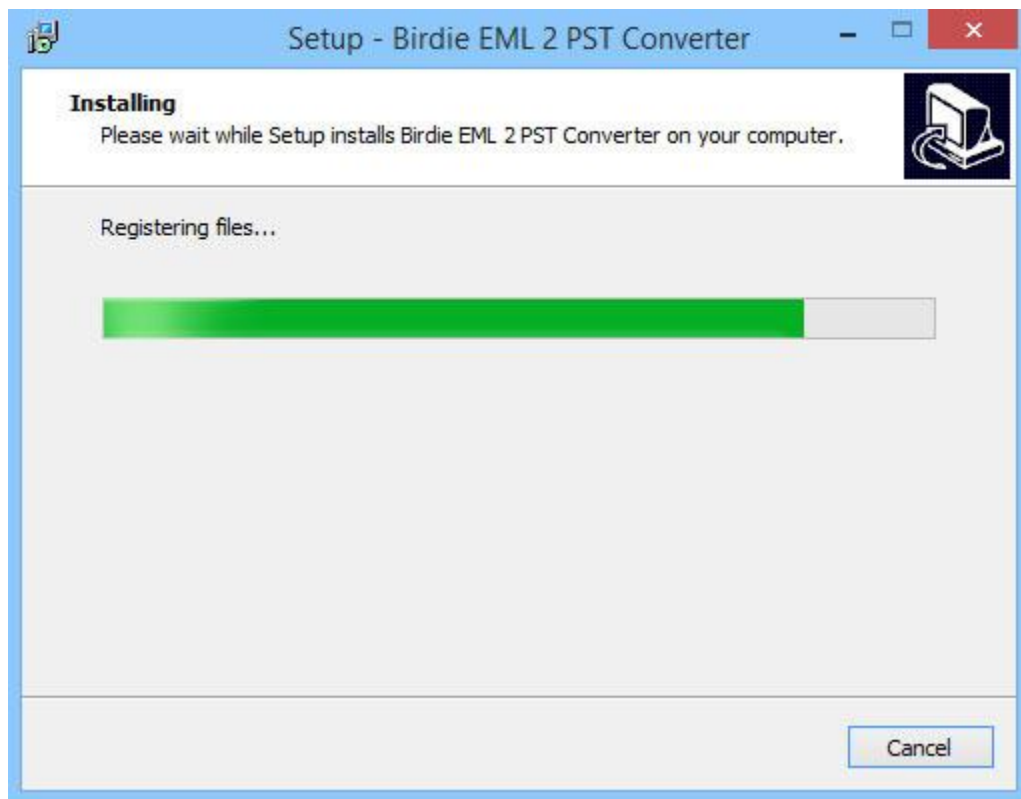
4. You can also change the short-cut folder. Click on “Next” option once you’re done



5. Now it's ready to install on your machine, Click on "Install" option

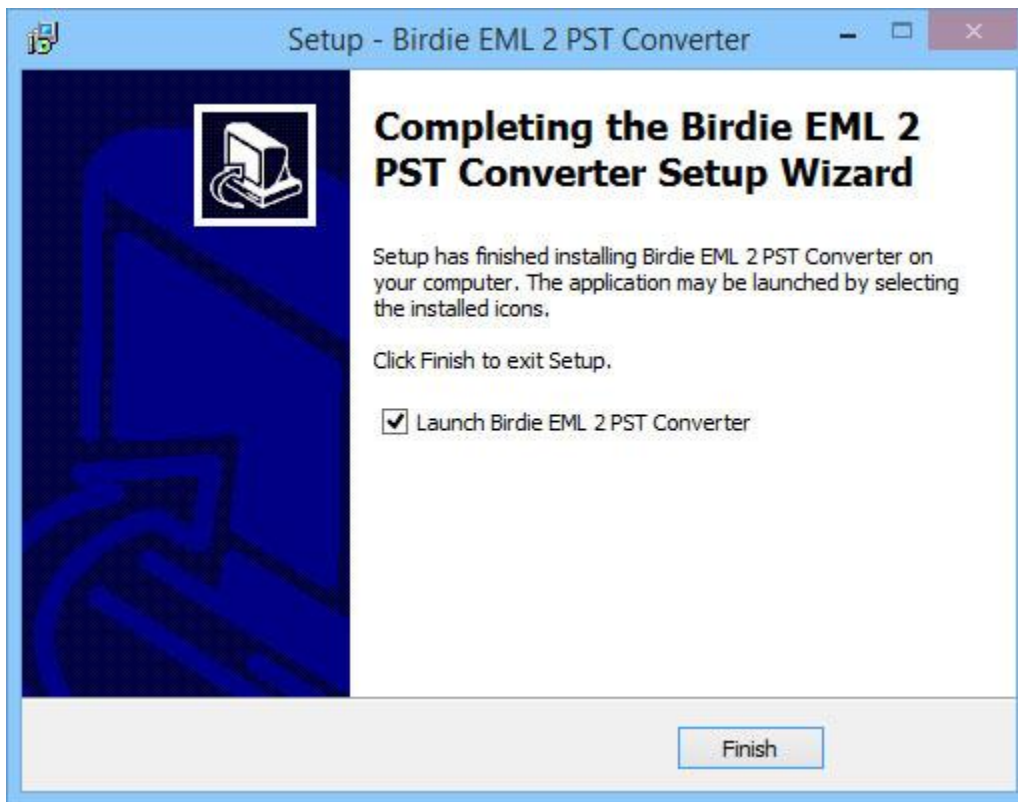


6. Now the software Installation has started

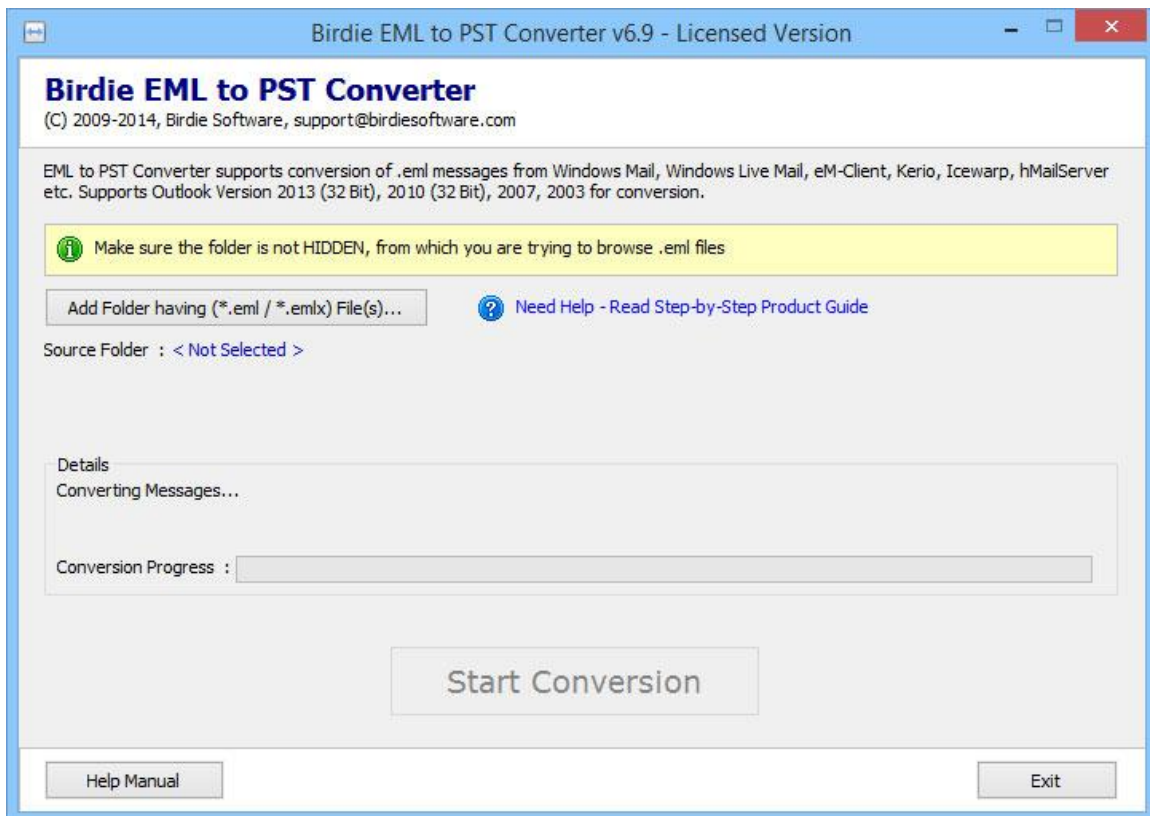




7. When the software installation process is complete, this message will show “Completing the BirdieEML 2 PST Converter Setup Wizard”. Now click on “Finish” button.



8. After Clicking on finish button, software will launch the first screen. Welcome screen of Birdie EML to PST Converter will appear like this.



Visit the software product guide page to check-out its working procedure:<http://www.birdiesoftware.com/eml-to-pst/how-to-convert.html>



5. Uninstallation of the EML 2 PST Converter software

To un-install the EML to PST Converter follow the instruction given below:

Before un-installation of the software, make sure that,software is not running in your system background.

There are 2 options to un-install the software, choose the 1 which is comfortable for you –

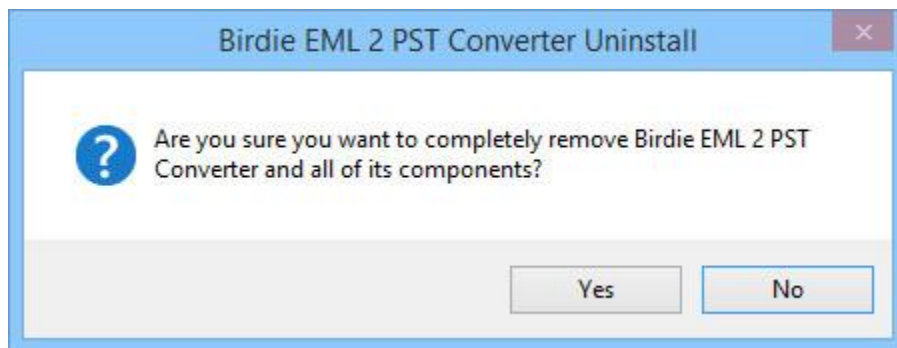
- Uninstall by Windows start menu
- Uninstall by Control Panel



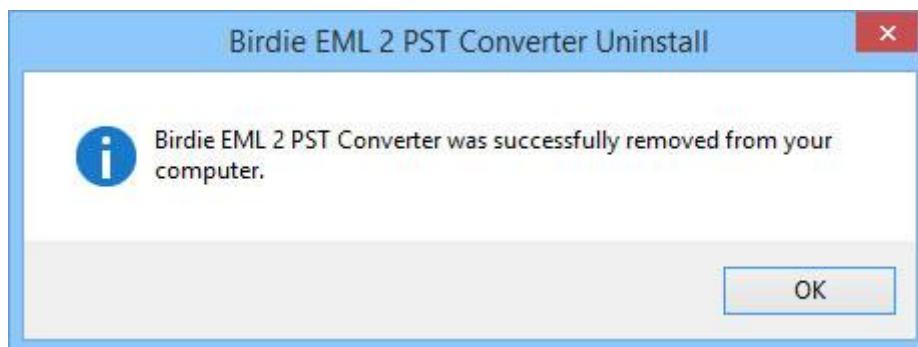
9. To remove the software from Start menu; follow the steps

Click on Start button >> All Program >> Birdie EML 2 PST Converter >> Uninstall.

If you are sure about uninstalling the software, click on Yes Button.

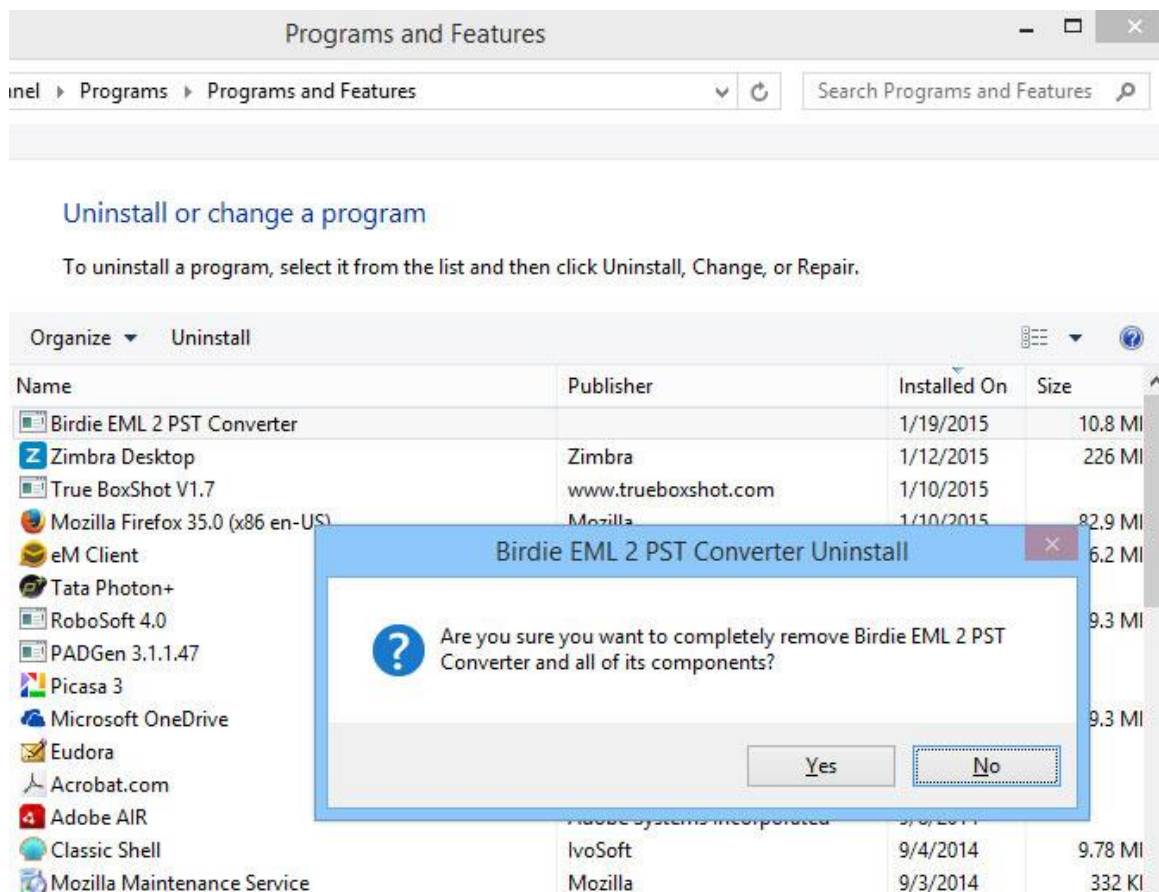


After this software un-installation process will start. After completion of the un-installation process, this Message will be shown >> click on OK



- Second, Uninstall software from control panel

Go to start menu >> Control Panel >> Programs >> Double Click on Birdie EML 2 PST Converter>> Click on Yes



The screenshot shows the Windows Control Panel window titled "Programs and Features". The breadcrumb path is "inet > Programs > Programs and Features". Below the breadcrumb is a search bar labeled "Search Programs and Features".

Below the search bar is a link "Uninstall or change a program" and a note: "To uninstall a program, select it from the list and then click Uninstall, Change, or Repair."

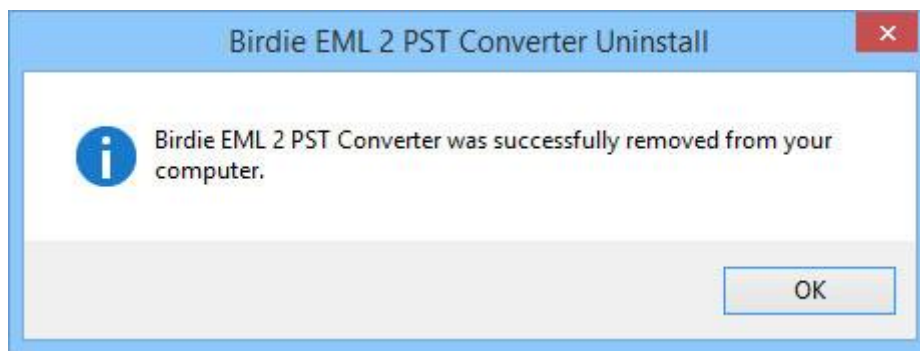
The main content area shows a list of installed programs. The "Uninstall" button is visible in the top left corner of the list area. The list has columns for Name, Publisher, Installed On, and Size.

Name	Publisher	Installed On	Size
Birdie EML 2 PST Converter		1/19/2015	10.8 MI
Zimbra Desktop	Zimbra	1/12/2015	226 MI
True BoxShot V1.7	www.trueboxshot.com	1/10/2015	
Mozilla Firefox 35.0 (x86 en-US)	Mozilla	1/10/2015	82.9 MI
eM Client			6.2 MI
Tata Photon+			
RoboSoft 4.0			9.3 MI
PADGen 3.1.1.47			
Picasa 3			
Microsoft OneDrive			9.3 MI
Eudora			
Acrobat.com			
Adobe AIR	Adobe Systems Incorporated	9/3/2014	
Classic Shell	IvoSoft	9/4/2014	9.78 MI
Mozilla Maintenance Service	Mozilla	9/3/2014	332 KI

A dialog box titled "Birdie EML 2 PST Converter Uninstall" is overlaid on the list. It contains a question mark icon and the text: "Are you sure you want to completely remove Birdie EML 2 PST Converter and all of its components?". There are "Yes" and "No" buttons at the bottom of the dialog.



After this software un-installation process will start and after completion of the un-installation process, this Message will be shown>> click on OK



Now, you have successfully install Birdie EML 2 PST Converter from your machine.